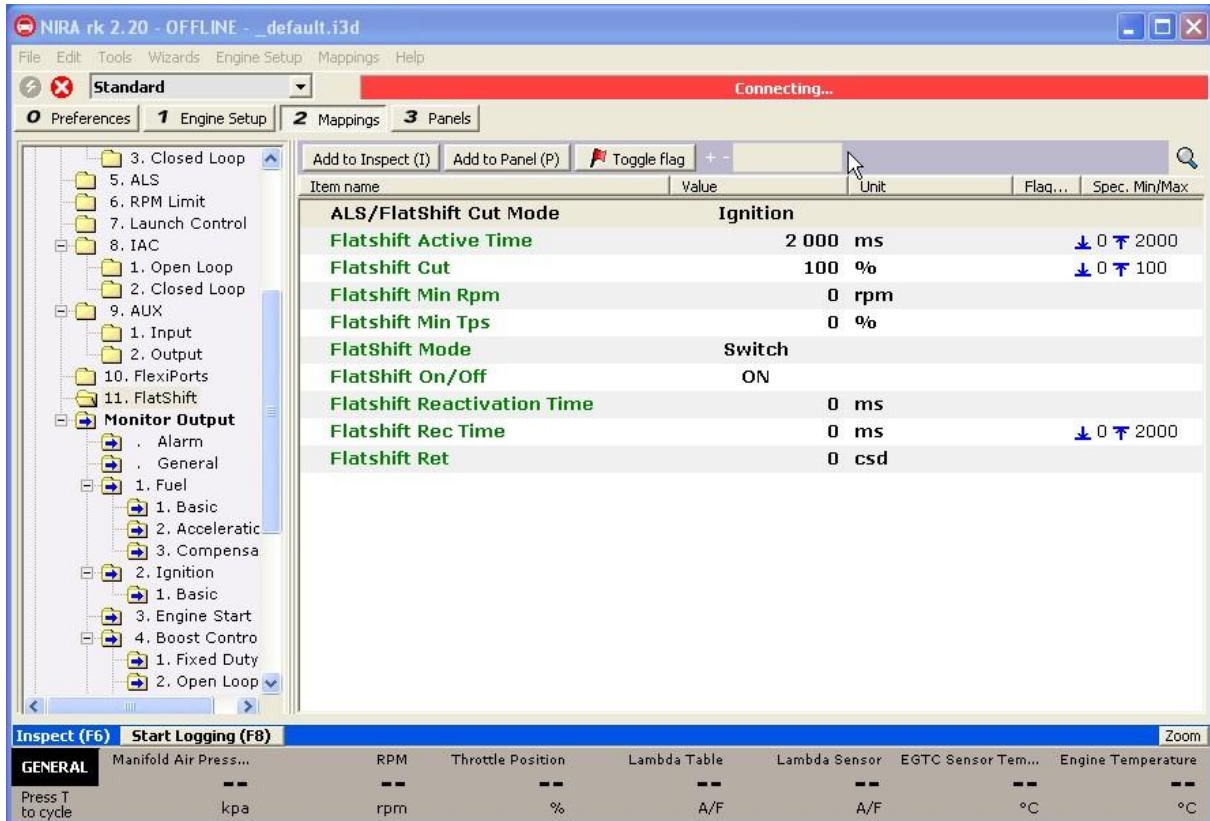




Document/File name TTT802_NIRAi3E.docx	Document Type External	Revision 1
First Revision, Sign and Date Bln 2010-04-15	Updated Revision, Sign and Date	Document Status and Sign Approved Lan
Document and Product Description Interfacing Nira i3+ to TTT802 Gearshift Controller		Page 1 (2)

Adjust Settings in the Nira i3+ according to this information...



Note: Flatshift Min Rpm is now controlled by the TTT802

Wire connections.

Use extension cable (TTT Part # 12-650-6) to interface the Nira i3+ with the TTT802 cable harness (TTT Part # 12-630-8).

Red – Cut Open Collector – connect to Nira i3+ Flatshift switch in / Pin 18

Blue – Cut Gnd – connect to Nira i3+ Engine Gnd / Pin 11 or Pin 12

White – Ign pulse – connect to Nira i3+ Tachometer out / Pin 22

Black - Gnd Ign pulse – connect to Nira i3+ Engine Gnd / Pin 11 or Pin 12



Document/File name TTT802_NIRAi3E.docx	Document Type External	Revision 1
First Revision, Sign and Date Bln 2010-04-15	Updated Revision, Sign and Date	Document Status and Sign Approved Lan
Document and Product Description		Page 2 (2)

Interfacing Nira i3+ to TTT802 Gearshift Controller

