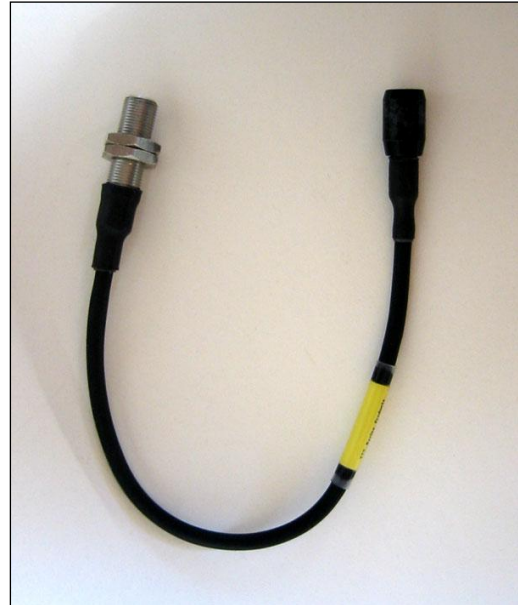




Document/File name DSC305101E	Document Type External	Revision 2
First Revision, Sign and Date Bln 2009-11-26	Updated Revision, Sign and Date Bln 2013-05-12	Document Status and Sign Approved Lan
Page 1 (2)		
Document and Product Description Description Hall Geartooth Sensor 55075 NPN M12 x 1 Pnr. 30-510-1		

Part # 30-510-1

The 55075 Geartooth sensor comes with a fitted waterproof SureSeal connector.
Typical application is speed sensor on gearboxes.
Directly connects to TTT802 Gearshift Controller Paddleshift cable harness.

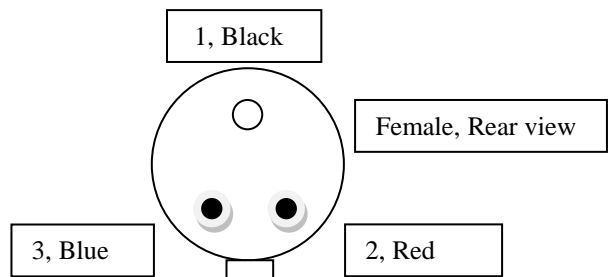


55075	0,5 m	3-pole SureSeal Female
-------	-------	------------------------

Connector: 3-pole SureSeal Female

Cable Length: 500mm
Crimp tube length: 450mm Type: DR25 4,8/2,4
Marking: Pnr & Snr Length: 30mm
Clear crimp tube over marking length: 45mm Type: 6 / 2
Crimp tube length: 30mm Type: ATUM 16 / 4
Crimp tube length: 30mm Type: ATUM 9 / 3

Black – con 1 (socket) - Gnd
Red – con 2 (pin) - + 12 Volt
Blue – con 3 (pin) – Signal



55075 Geartooth Hall Effect Sensor Features and Benefits

Features

- Rotary position geartooth sensor
- Stainless steel M12 threaded barrel
- Electronic protection against severe and automotive environments
- Self adjusting magnetic range
- 3 wire (voltage output)
- EMC protection (consult Hamlin)
- Short circuit/reverse voltage protection
- Zero speed detection

Benefits

- Long life; up to 20 billion operations
- High speed operation
- No chopper delay
- Unaffected by harsh environments
- Rotary orientation not critical
- On-chip 10 bit A/D converter
- Customer selection of cable length and connector type

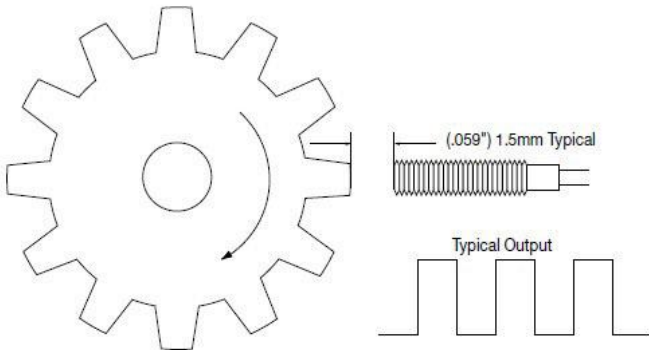
Applications

- Geartooth sensor
- Camshaft sensor
- Linear encoder
- Rotary encoder

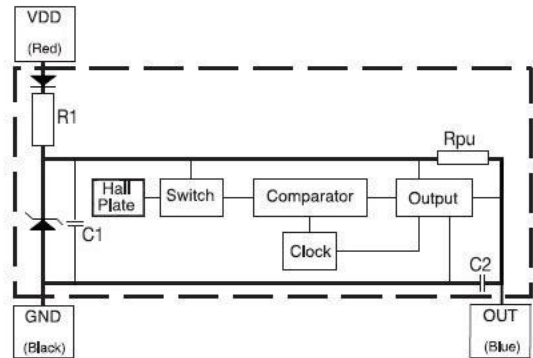


Document/File name DSC305101E	Document Type External	Revision 2
First Revision, Sign and Date Bln 2009-11-26	Updated Revision, Sign and Date Bln 2013-05-12	Document Status and Sign Approved Lan
Document and Product Description Description Hall Geartooth Sensor 55075 NPN M12 x 1 Pnr. 30-510-1		Page 2 (2)

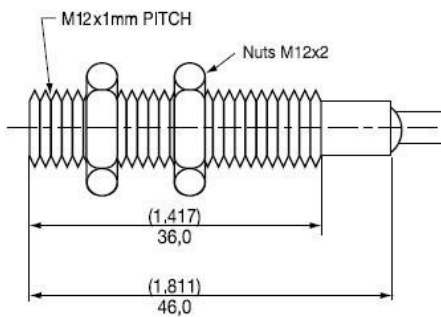
APPLICATION EXAMPLE - Geartooth Sensor



BLOCK DIAGRAM



DIMENSIONS (in) mm



Speed sensor fitted on a Tractive gearbox



SPECIFICATIONS

Hall Type			Digital Switch 3 Wire (Voltage Output)
Supply Voltage (Note 1)	Maximum	Vdc	-25 to +25.2
	Operation	Vdc	4.75 to 25.2
	Overvoltage Protection	Vdc-max	27
Output High Voltage		Vdc-min	VDD - 2 (sinking outputs with internal pull-up resistor)
Output Low Voltage		Vdc-max	0.6 @ 20mA
Output Current (continuously on)		mA-max	20
Current Consumption		mA-min	1
		mA-max	10.5
Switching Speed		kHz-max	15
Temperature	Operating	°C	-40 to +85
	Storage	°C	-65 to +85

Note 1 - As long as Tj (Junction Temperature) is not exceeded