



Document/File name <b>DSC126407E.docx</b>	Document Type <b>External</b>	Revision <b>5</b>
First Revision, Sign and Date <b>Bln 2009-11-11</b>	Updated Revision, Sign and Date <b>Bln 2010-03-22</b>	Document Status and Sign <b>Approved Lan</b>
Document and Product Description <b>Description TTT802-BAL Cable harness "Add-on" Pnr. 12-640-7</b>		Page <b>1 (3)</b>

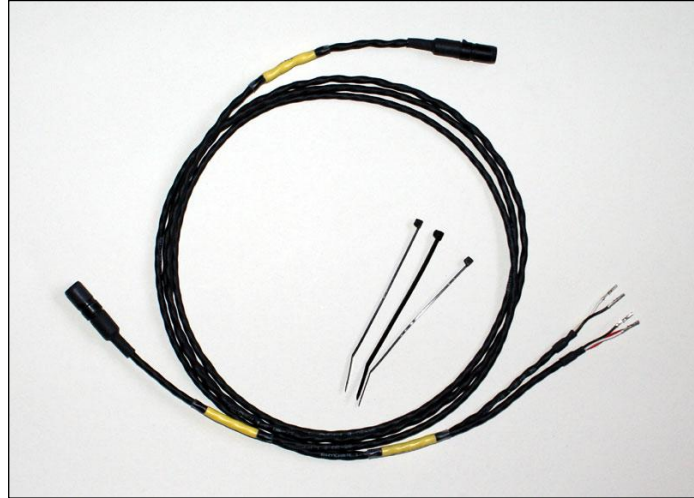
**Part # 12-640-7**

Professional Raychem DR25/Spec.44 Cable harness with fitted Waterproof connector. Add-on to the TTT802-S or TTT802-P Cable harness. Complements the harness with connectors for **Analog Lever sensor** and **Blip output**. The output is not galvanic isolated.

**Blip output:** Loads max. 2 Amps can be controlled directly by the TTT802. However a special extension cable that adds Vbat needs to be used to supply the solenoid, valve etc. with power. For higher loads some type of power switch must be used. For example the TTT937-B can handle 10 Amps continuously and switches in microseconds.

All cables are clearly marked. Custom lengths and/or connectors on request.

**Weight:** 67 grams

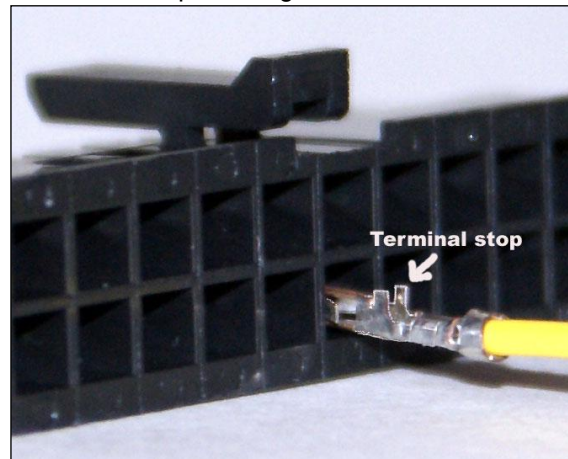
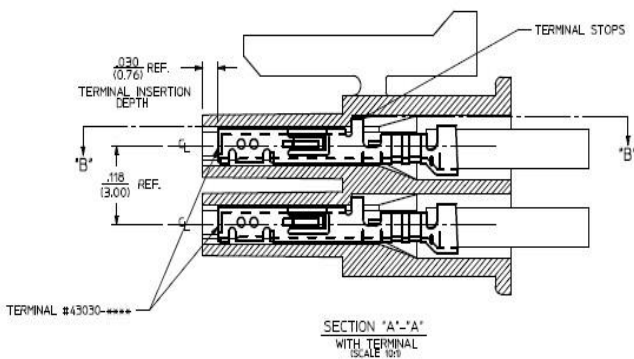


<b>Analog Lever</b>	1,4 m	3-pole SureSeal Male
<b>Blip</b>	1,0 m	2-pole SureSeal Male

**TTT802/A & B – 5 pcs. Molex Microfit 3,0 sockets**

Length crimp tube to connector housing: 30mm  
 Marking: TTT Racing Products Pnr: 12-640-7 Snr: XXXX Length: 30mm  
 Length marking tube to beginning of flying wires:150mm  
 Cable strips. 3 pcs.  
 Clear crimp tube over marking length: 45mm Type: 9 / 3  
 Crimp tube length: 15 + 15mm Type ATUM 4 / 1

**It is important** that the Microfit sockets are inserted with "terminal stops" facing towards the lock tab...



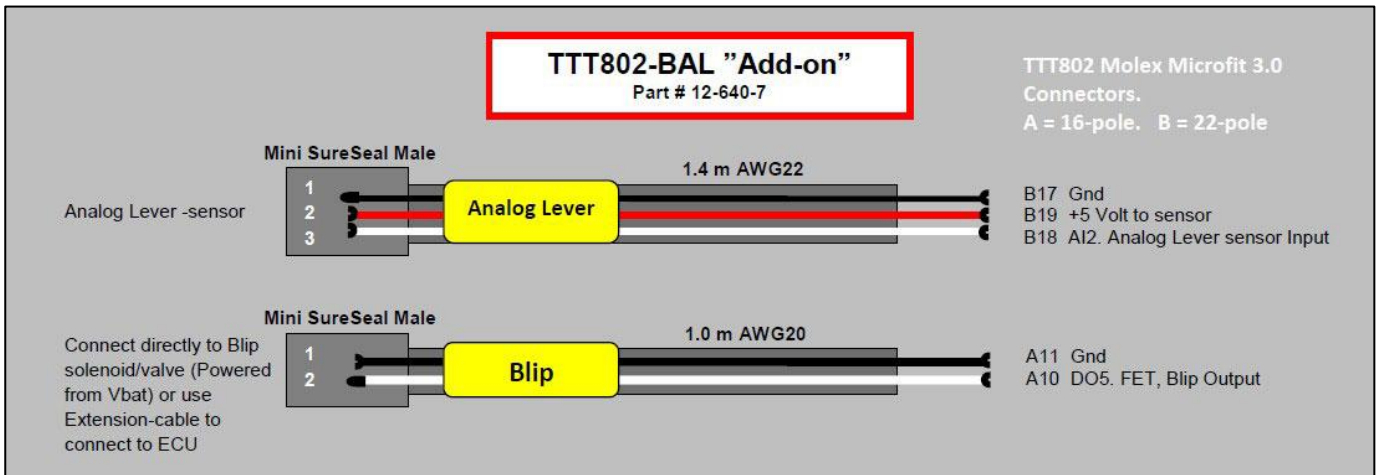
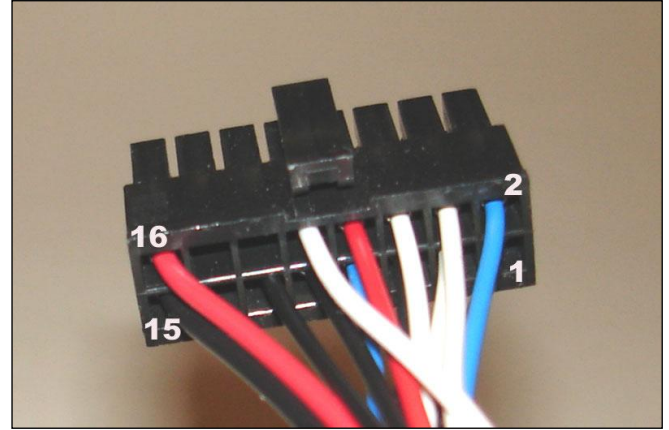
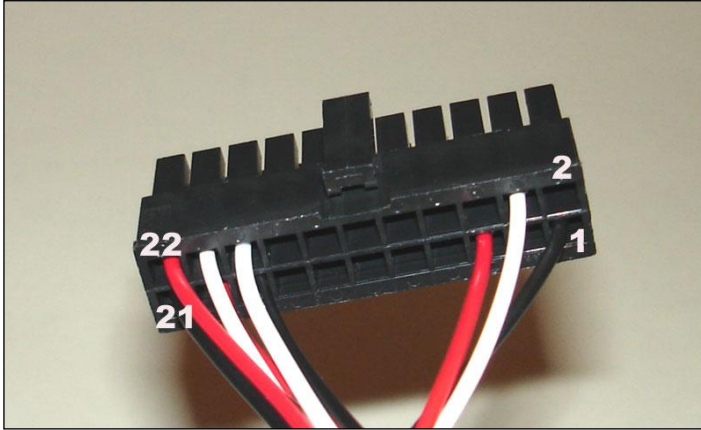


Document/File name <b>DSC126407E.docx</b>	Document Type <b>External</b>	Revision <b>5</b>
First Revision, Sign and Date <b>Bln 2009-11-11</b>	Updated Revision, Sign and Date <b>Bln 2010-03-22</b>	Document Status and Sign <b>Approved Lan</b>
Page <b>2 (3)</b>		
Document and Product Description <b>Description TTT802-BAL Cable harness "Add-on" Pnr. 12-640-7</b>		

**Insert the 5 cables according to the following tables / pictures:**

B17 – Black – Gnd  
 B18 – White – Signal Analog Lever  
 B19 – Red – + 5 Volt

A10 – White – Blip Output (Open collector)  
 A11 – Black – Gnd





Document/File name <b>DSC126407E.docx</b>	Document Type <b>External</b>	Revision <b>5</b>
First Revision, Sign and Date <b>Bln 2009-11-11</b>	Updated Revision, Sign and Date <b>Bln 2010-03-22</b>	Document Status and Sign <b>Approved Lan</b>
Page <b>3 (3)</b>		
Document and Product Description <b>Description TTT802-BAL Cable harness "Add-on" Pnr. 12-640-7</b>		

### **Analog Lever Connector: 3-pole SureSeal Male**

Cable Length: 1600mm

Marking: Analog Lever, Length: 30mm

Clear crimp tube over marking length: 45mm Type: 6 / 2

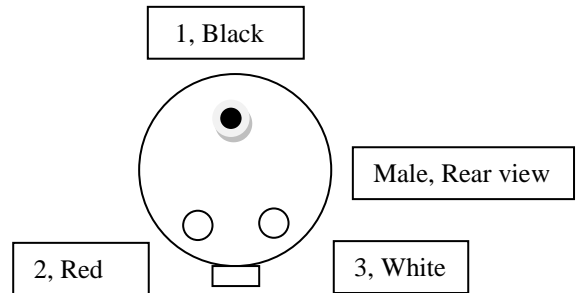
Crimp tube length: 1450mm Type: DR25 3.2 / 1.6

Crimp tube length: 30mm Type: ATUM 9 / 3

TTT802 Connector B17 – 1, Black AWG22 – Gnd

TTT802 Connector B18 – 3, White AWG22 – Signal

TTT802 Connector B19 – 2, Red AWG22 – + 5 Volt



### **Blip Connector: 2-pole SureSeal Male**

#### **Connects to control input on ECU**

Cable Length: 1200mm

Marking: Blip, Length: 30mm

Clear crimp tube over marking length: 45mm Type: 6 / 2

Crimp tube length: 1100mm Type: DR25 3.2 / 1.6

Crimp tube length: 30mm Type: ATUM 8 / 2

TTT802 Connector A10 – 2, White AWG20 – Output (Open collector)

TTT802 Connector A11 – 1, Black AWG20 – Gnd

