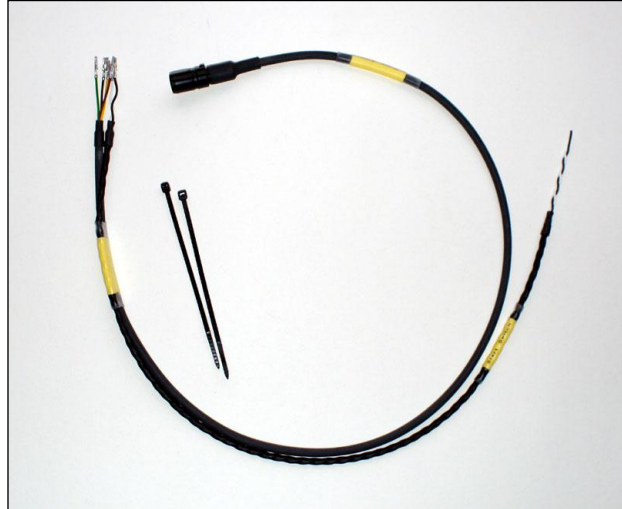




Document/File name DSC126399E.docx	Document Type External	Revision 4
First Revision, Sign and Date Bln 2009-11-11	Updated Revision, Sign and Date Bln 2010-03-22	Document Status and Sign Approved Lan
Document and Product Description Description TTT802-QT Cable harness "Add-on" Pnr. 12-639-9		Page 1 (2)

Part # 12-639-9

Professional Raychem DR25/Spec.44 Cable harness with fitted Waterproof connector. Add-on to the TTT802-S or TTT802-P Cable harness. Complements the harness with connector for **Quick Trim** remote box (or custom mounted potentiometers) and flying wires for **Startswitch**.



All cables are clearly marked. Custom lengths and/or connectors on request.

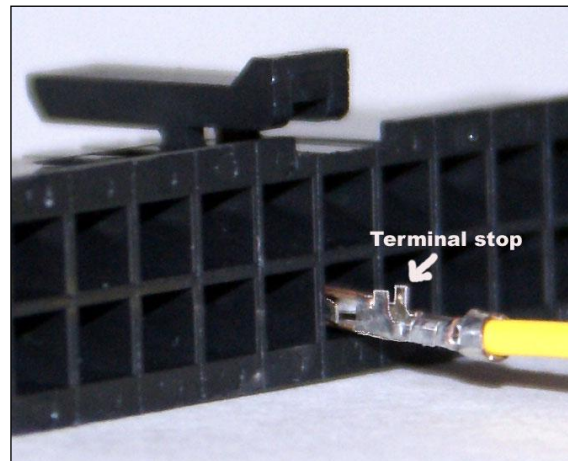
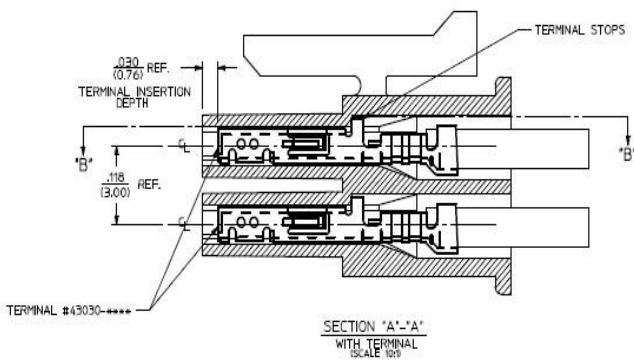
Weight:
35 grams

Startswitch	0,4 m	Flying wires
Quick Trim	0,6 m	4-pole SureSeal Male

TTT802/B – 6 pcs. Molex Microfit 3,0 sockets

Length crimp tube to connector housing: 30mm
 Marking: TTT Racing Products Pnr: 12-639-9 Snr: XXXX Length: 30mm
 Length marking tube to beginning of flying wires:150mm
 Cable strips. 2 pcs.
 Clear crimp tube over marking length: 45mm Type: 9 / 3
 Crimp tube length: 15 + 15mm Type ATUM 4 / 1

It is important that the Microfit sockets are inserted with "terminal stops" facing towards the lock tab...



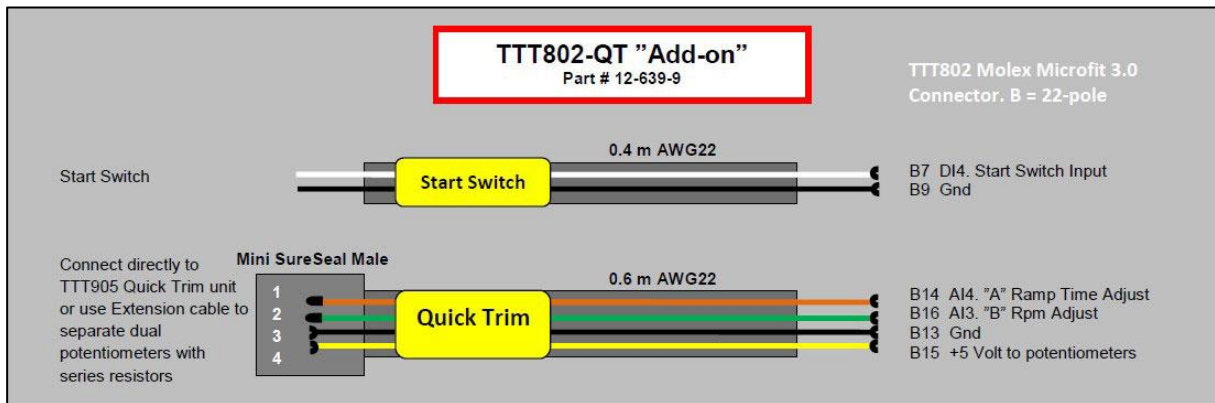
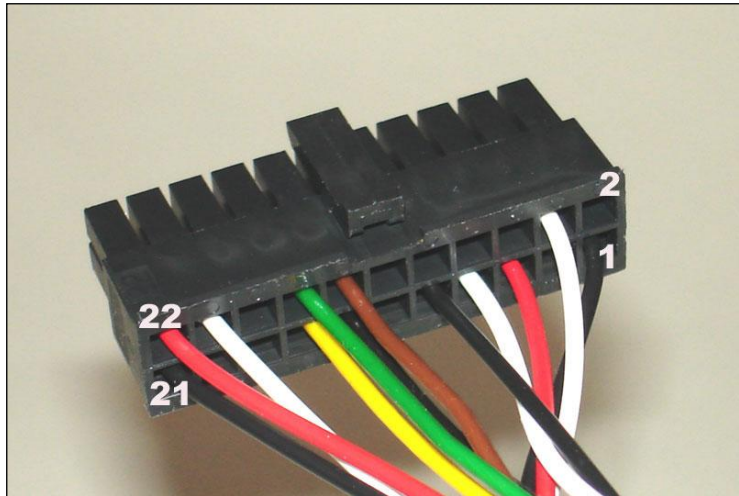


Document/File name DSC126399E.docx	Document Type External	Revision 4
First Revision, Sign and Date Bln 2009-11-11	Updated Revision, Sign and Date Bln 2010-03-22	Document Status and Sign Approved Lan
Document and Product Description Description TTT802-QT Cable harness "Add-on" Pnr. 12-639-9		Page 2 (2)

Insert the 6 cables according to the following table / picture:

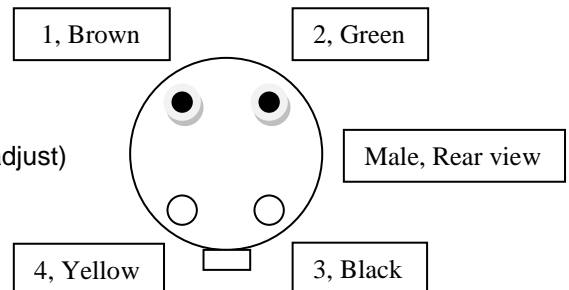
- B7 – White – Signal Startswitch
- B9 – Black – Gnd

- B13 – Black – Gnd
- B14 – Brown – "A" (Ramp Time adjust)
- B15 – Yellow – + 5 Volt
- B16 – Green – "B" (Rpm adjust)



Quick Trim Connector: 4-pole SureSeal Male

- Cable: Draka 4 x AWG22. Length: 650mm
- Marking: Quick Trim, Length: 30mm
- Clear crimp tube over marking length: 45mm Type: 6 / 2
- Crimp tube length: 30mm Type: ATUM 9 / 3
- TTT802 Connector B14 – 1, Brown AWG22 – "A" (Ramp Time adjust)
- TTT802 Connector B16 – 2, Green AWG22 – "B" (Rpm adjust)
- TTT802 Connector B13 – 3, Black AWG22 – Gnd
- TTT802 Connector B15 – 4, Yellow AWG22 – + 5 Volt



Start Switch Connector: None

- Cable Length: 550mm
- Marking: Start Switch, Length: 30mm
- Clear crimp tube over marking length: 45mm Type: 6 / 2
- Crimp tube length: 425mm Type: DR25 3.2 / 1.6
- Crimp tube length: 15mm Type: ATUM 4 / 1
- TTT802 Connector B7 – White AWG22 – Signal
- TTT802 Connector B9 – Black AWG22 – Gnd